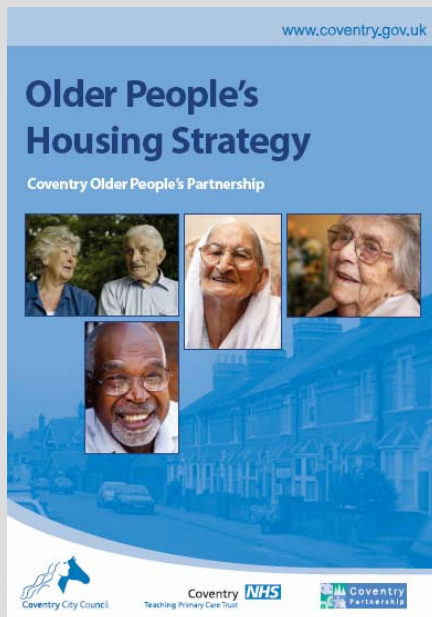


Community Services – Older People Services

Older People's Housing Strategy



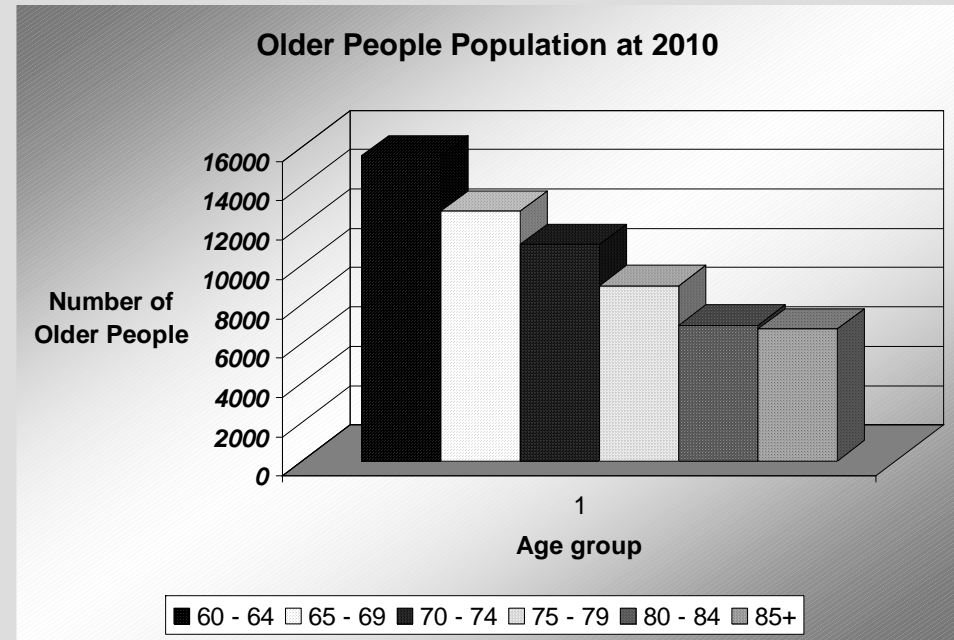
Inderjit Lahel – Senior
Contracts Manager – Older
People's Commissioning

Older People Demographics in Coventry

Older Peoples population by 2020.

- 60 – 64 – 17100 (1600 increase)
- 65 – 69 – 13900 (1400 increase)
- 70 – 74 – 12500 (1700 increase)
- 80 – 84 – 7400 (500 increase)
- 85 + - 7600 (900 increase)

•Source : Coventry Older People's Housing Strategy 2006



Older People's Housing Strategy

- *What is it?*

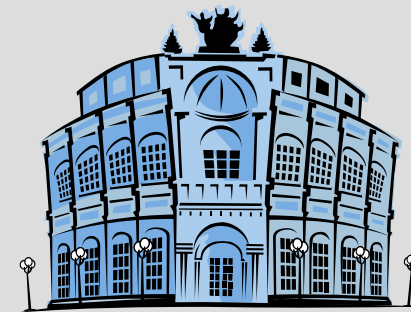
- Developed in 2006
- Identifies key themes to improve the range and quantity of housing provision for older people
- Is the document that Older People Services are working towards

- *Strategy Aims*

- Increase the range, supply and choice of housing across all tenures
- Improve the standards across all tenures by targeted investment, intervention and support
- Meet the specific needs of vulnerable groups, by encouraging the provision of suitable housing related support services
- Work with residents and other partners to develop safe, healthy and sustainable communities

Delivering the strategy (1)

- New Homes for Old – Phase 2
- PFI Schemes – Total of 5 schemes
- 2 Specialist Dementia
- 3 Housing with Care schemes
- All run by Anchor Trust (building and care)
- 25 year contract
- Building will be City Council owned after the contract has finished



Delivering the Strategy (2)

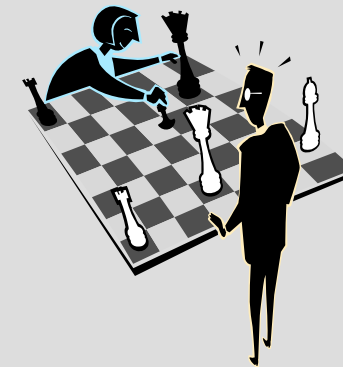
- Ribbon Court – Foleshill Road. Inter-cultural scheme
- 50 units for social rent
- Accord are the Housing Association
- Ashram are the care provider on site
- Tenants can choose to use Ashram as their care provider or use an Individual Budget to use on their preferred provider

Delivering the Strategy (3)

- Taunton Way, Kerseley
- Guidelines are in latter stages of development
- 30 units for older people
- Housing Association to be selected
- Part of a older persons community within the area – links to Copthorne Road, Cottage Farm Lodge, Henry Court and Halford Lodge
- Brief being finalised to include high levels of energy efficiency/ carbon reduction
- Warwick Court, Earlsdon
- 52 units – 2 bedded apartments (6 LD)
- Already developed
- Suitable for adaptations
- Discussions with Housing Corporation for funding
- Decision within the next 2 weeks

Influencing Factors

- Lifetime Homes:Lifetime Neighbourhoods : **National Strategy for Housing in an ageing population** – (Coventry Older People’s Services is already supporting most of this strategy – working towards sustainable communities)
- Putting People First
- Is Coventry “the type of place that people want to grow old in”
- Personal budgets for all people eligible for Social Care – block contract issues, nomination rights....
- Supporting People funding (revenue)
- Reduction in capital – I.e. SHRF
- Changing national housing market
- Motivation in older people moving



Existing Housing Stock

- Large number of older people living in houses built in 1910's – 1950's
- Low levels of energy efficiency
- General building conditions
- Schemes such as Contact and Connect aims to help Older People in accessing a range of services to help with these types of issues
- Orbit care and repair support older people to remain in their own home through a range of options
- Supporting access to DFG for older people



Questions



Contact Details

Inderjit.Lahel@coventry.gov.uk

0247 683 3423